

ESC
MEDICAMS

**PROFESSIONAL ENDOSCOPY
CAMERA WITH HDR**

ENT-3000U

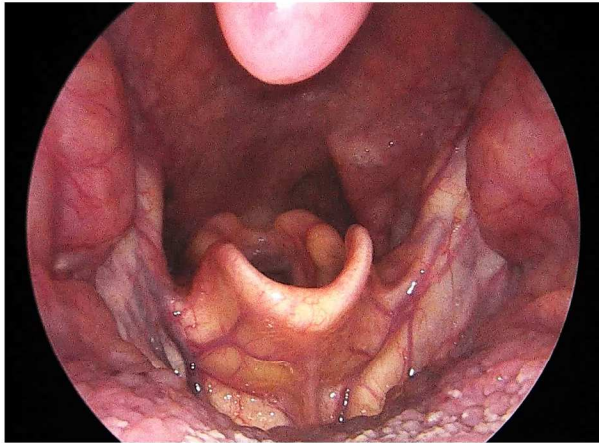




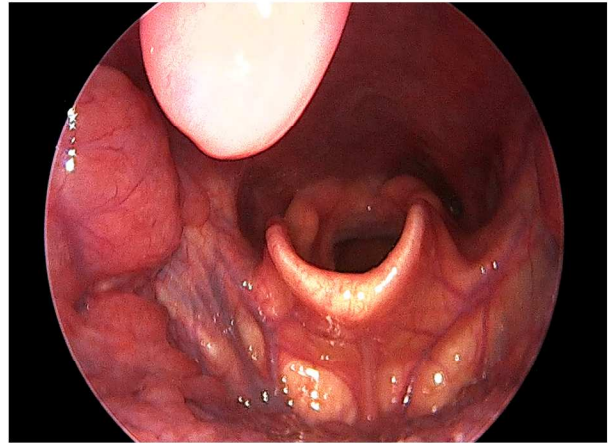
FEATURES

- Latest DSP with HDR 1.2 Megapixel Sensor
- HDR (High Dynamic Range) for sharper details
- Special Medical filter on camera sensor for better colors
- Long depth of focus makes it easy to achieve accurate focus
- 3 Meter medical grade ultra soft cable with camera head
- Fast processor for low delay
- High color accuracy with intelligent white balance
- New Anti-reflective coated german glass HD lens
- Medical grade power supply for camera
- Push lock white balance key on camera head





With Color Correction Filter



Without Color Correction Filter

HIGH COLOR ACCURACY

- Get better color differentiation with color correction medical filter on sensor.
- Better contrast and sharpness with medical filter on sensor.

WHITE BALANCE

- Adjust to any light condition or light source with One press white balance on camera head.

PORTABLE

- Low light CCD Sensor which produce exceptional images even with portable or low power mini light source.



ANTI REFLECTION FULL HD GLASS LENS

- Prevents glare from liquid and produces sharper images with german optics.

ENT-3000U

PROFESSIONAL ENDOSCOPY CAMERA



SPECIFICATIONS

Model	ENT-3000	
Signal System	PAL	NTSC
Image Sensor	1/3" Super HAD CCD II(Double Scan)	
Effective Pixels Number	976 (H) x 582 (V) 570K	976 (H) x 494 (V) 480K
Scanning System	2:1 Interlace	
Scanning Frequency	H: 15.625 KHz / V: 50 Hz	H: 15.734 KHz / V: 59.94 Hz
Horizontal Resolution	700 TV Lines	
Sensor Resolution	1.2 Megapixel	
Camera Cable Length	3 Meter	
Video Cable Length	1.5 Meter	
Focal Length of Lens	22 mm.	
Exposure Control	Auto	
Output	1 Video Output (BNC Composite)	
Min. Illumination	Color: 0.1 Lux (50IRE) / 0.0002 Lux (DSS) B/W: 0.08 Lux (50IRE) / 0.00005 Lux (DSS)	
Sync. System	Internal	
S/N Ratio	More than 52dB (AGC Off)	
Video Output Level	1.0V p-p (75 Ohm Unbalanced, Composite)	
Electronic Shutter Speed	Auto	
Lens Mount	CS Mount	
Day & Night System	TDN (with IR-cut filter)	
Super DNR	OFF /2D (Y 0-15)	
White Balance	PUSH LOCK	
AGC	AUTO (OFF, 37dB)	
SENSE-UP (DSS)	Auto x2 ~ Auto x512	
HLC/BLC	BLC, OFF, HLC (High Light Compensation)	
WDR	ON / OFF(HIGH, MID, LOW)	
Connector	Screw Type	
Power Voltage	12VDC (Camera Head) , AC110V-240V (Control Unit)	
Power Consumption	Max. 2W / 170mA	
Operating Temperature	-10°C ~ +50°C	
Operating Humidity	30% ~ 80% RH	
Dimensions	195 (L) x 220 (W) x 80 (H) mm. (Control Unit) , Ø 34 mm. x 67.7 mm. (Camera Head)	
Weight (Net)	Approx. 1050 g. (Control Unit) , Approx. 100 g. (Camera Head without Cable and lens)	